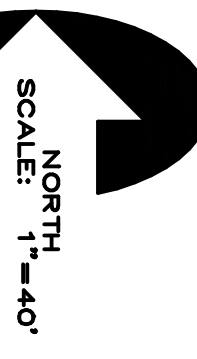
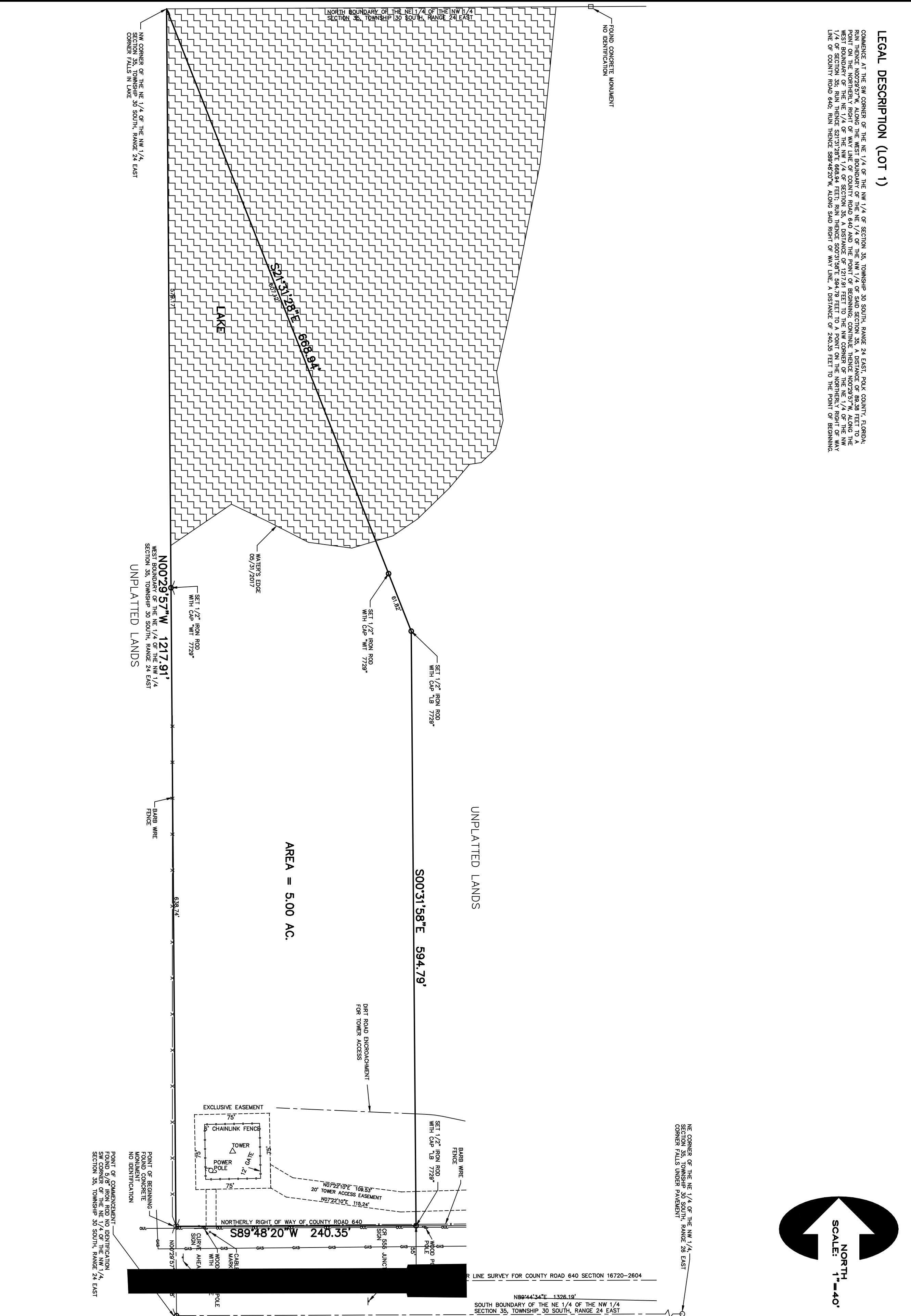


LEGAL DESCRIPTION (LOT 1)

COMMENCE AT THE SW CORNER OF THE NE 1/4 OF THE NW 1/4 OF SECTION 35, TOWNSHIP 30 SOUTH, RANGE 24 EAST, POLK COUNTY, FLORIDA; RUN THENCE N00°29'57"W, ALONG THE WEST BOUNDARY OF THE NE 1/4 OF THE NW 1/4 OF SAID SECTION 35, A DISTANCE OF 89.38 FEET TO A POINT ON THE NORTHERLY RIGHT OF WAY LINE OF COUNTY ROAD 640 AND THE POINT OF BEGINNING; CONTINUE THENCE N00°29'57"W, ALONG THE WEST BOUNDARY OF THE NE 1/4 OF THE NW 1/4 OF SECTION 35, A DISTANCE OF 1217.91 FEET TO THE NW CORNER OF THE NE 1/4 OF THE NW 1/4 OF SECTION 35; RUN THENCE S21°31'28"E, 868.34 FEET; RUN THENCE S00°31'58"E, 594.79 FEET TO A POINT ON THE NORTHERLY RIGHT OF WAY LINE OF COUNTY ROAD 640; RUN THENCE S89°48'20"W, ALONG SAID RIGHT OF WAY LINE, A DISTANCE OF 240.35 FEET TO THE POINT OF BEGINNING.



NE CORNER OF THE NE 1/4 OF THE NW 1/4 OF SECTION 35, TOWNSHIP 30 SOUTH, RANGE 24 EAST CORNER FALLS UNDER PAVEMENT

UNPLATTED LANDS

AREA = 5.00 AC.

UNPLATTED LANDS

REVISION

DATE: 7/24/17

DRAWN BY: RML

ROBERT E. LAZENBY III
P.S.M. #2260, C.A. #7729

DATE:

SEAL

ERS

REGISTERED SURVEYOR

LAZENBY III, ROBERT E.
NO. 36807
FLA. (850) 466-4877

BOUNDARY SURVEY LOT 1

BEPAS LLC

LOT 1

SECTION	35
TOWNSHIP	30 S
RANGE	24 E
DWER	
SHEET NO.	1
OF 1 SHEETS	